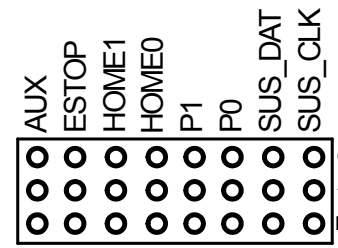


Power IN

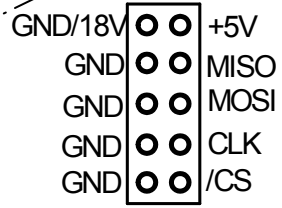


IO Connectors

OneStep1
V2.12
(c)www.opendcc.de

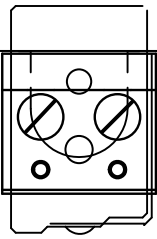
Stepper
B A

ExtPlug

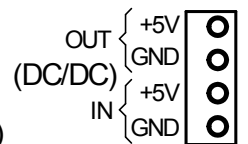
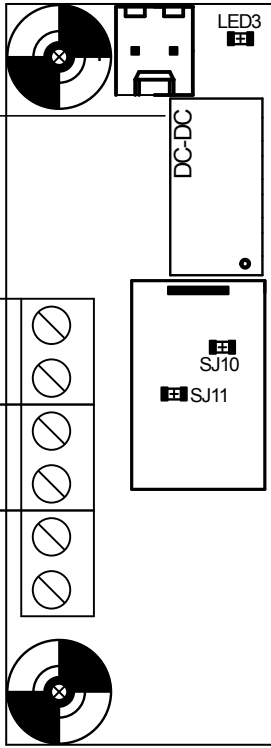


SUSI
schwarz
grau
blau
rot

DC (regulated)
9..18V



TR_VCC
TR_DCC2 (GND)

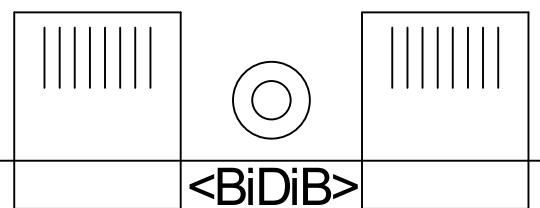


(Gleis)
(von Zentrale)
DCC

CS_DCC1
CS_DCC2
TR_DCC1
TR_DCC2 (GND)
TR_VCC
TR_DATA

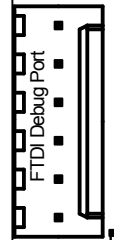
Zur Bühne

DCC
Option
(Aux)



<BiDiB>

FTDI
Panel
(Control)



LED2 LED1